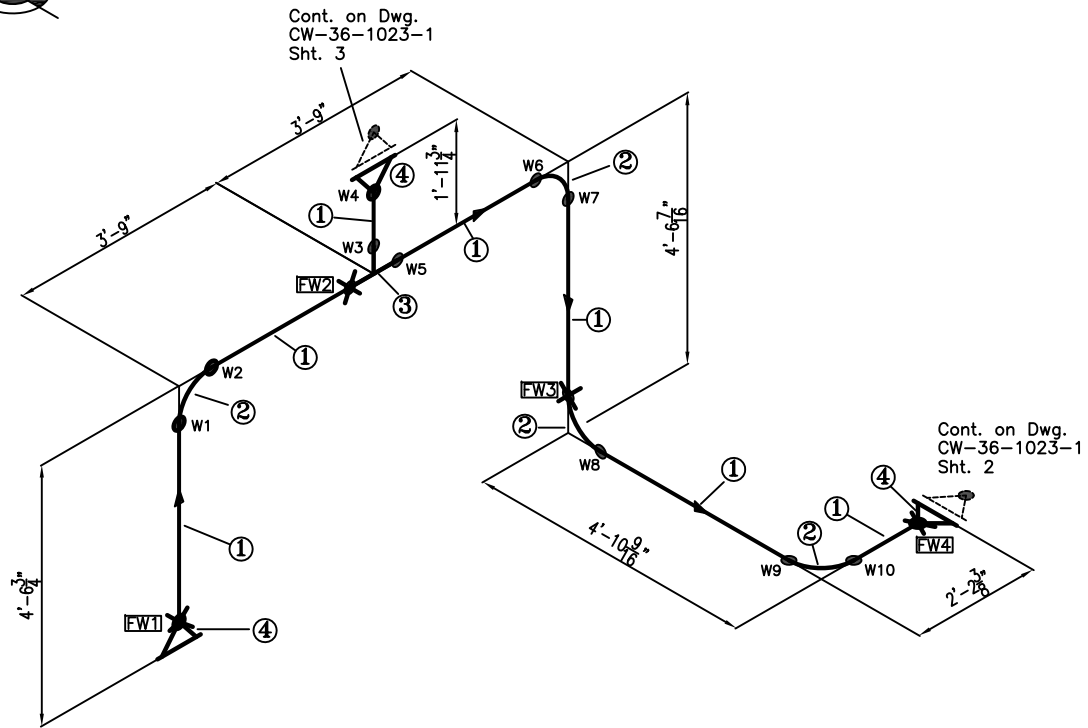
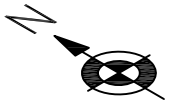


DRAWING NUMBER
CW-36-1023-1



LEGEND
 FW FIELD WELD
 TACK TACK WELD
 FMU FITTING MAKE-UP
 PE PLAIN END
 EXIST EXISTING

BILL OF MATERIAL

MARK	DESCRIPTION	SIZE	QTY
PIPE			
1	Pipe, Sch.40, ASTM A53 CS	4"	17' 8-3/8"
FITTINGS			
2	LR 90, Sch.40, ASTM A53 CS	4"	4
3	Tee, Sch.40, ASTM A53 CS	4" X 4"	1
FLANGES			
4	RFWN, 150# Sch.40, ASTM A105 CS	4"	3

PAINT SPECS

PAINT SYSTEM:	COLOR	MILLS
3 Coat		
Primer: Zinc Clad IV	-	3
Intermediate: Micropoxy 645	LIGHT GREY	5
Finish: Micropoxy 645	LIGHT GREY	5



BURKES MECHANICAL, INC.

BRENT, AL. (205) 926-5847

JOB # 55555 CUSTOMER P.O. NO.: 555-5555

CUSTOMER: MOCK MECHANICAL

**PROPOSED RELIEF LINE FROM
#2 AIG MIXER**

SHOP WELDS							
PIPE CODE: B31.1 2004				PIPE CODE: B31.1 2004			
WELD#	WPS	ID	NDE	WELD#	WPS	ID	NDE
W1				W6			
W2				W7			
W3				W8			
W4				W9			
W5				W10			

FIELD WELDS			
PIPE CODE: B31.1 2004			
FW#	WPS	ID	NDE
FW1			
FW2			
FW3			
FW4			

Scale	Dwg.	Sheet	Rev.	Spool
NONE	CW-36-1023-1	1 of 3	0	